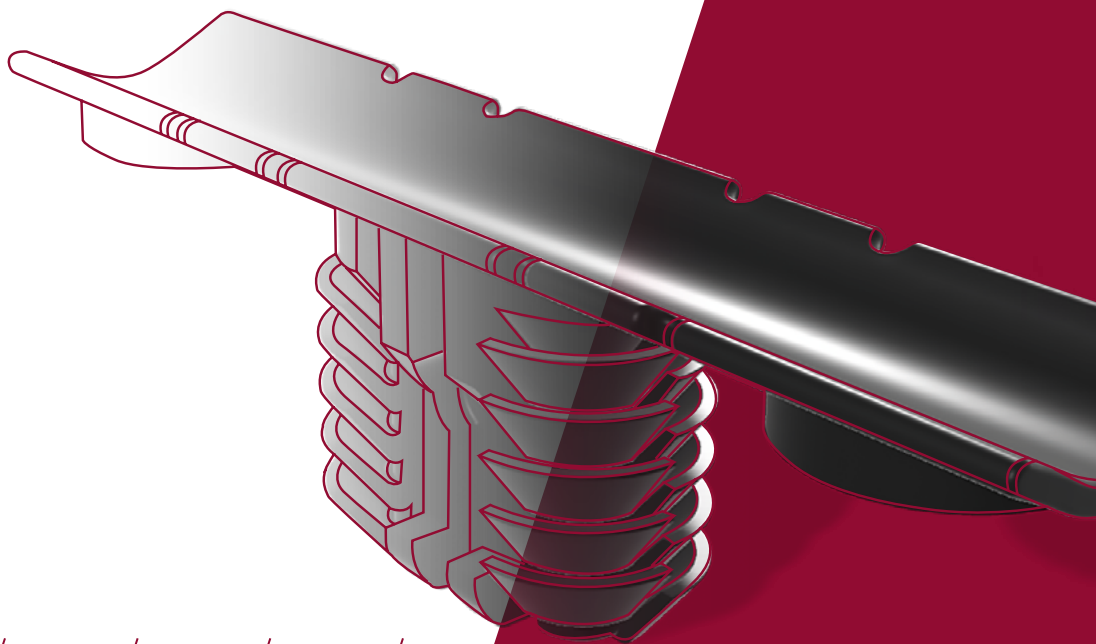


Automated Gluing Locator – Precision meets efficiency

DIN 72036-
compliant



Our Comprehensive Automation Solution

Standard
Hotmelt Glue



Multiple Locators
with different
mounting options



Standard
Sethead



Locator



Automation Cell



Overcoming new challenges

In addition to the familiar problems of wire harness assembly, such as the growing complexity of wiring systems and the high error potential - **the introduction of DIN 72036 brings new challenges.** The requirements on traceability and process controls are rising. The foundations for automation must be laid.

This is where the Automated Gluing Locator from ITW comes in:

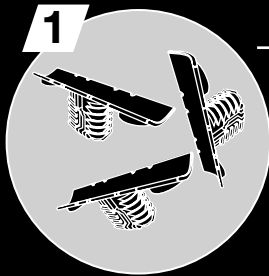
as an all-in-one solution for fully automatic assembly, it allows you to introduce **automation to your wire harness production**, overcome the complexities inherent to physical wiring systems and meet all process requirements.

The all-in-one solution

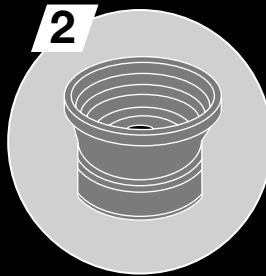
ITW Automotive offers a **complete solution, providing locators, expertise and integration support**. ITW's sethead is compatible with all locator variants, while IWOD's proven Hotmelt Glue guarantees adhesion to **all common tape materials** (except PVC). The automation cell ensures a standardised process.

Our locators, including basic and two-component solutions such as the 2K locator for doors, come with a range of **mounting options**. Wrap clips offer versatile cable fixing for different thicknesses and fixing types.

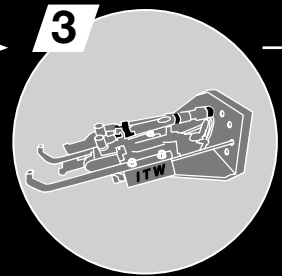
Process Steps



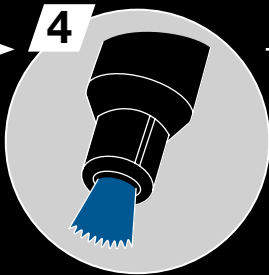
1
The locators are delivered as bulk material ...



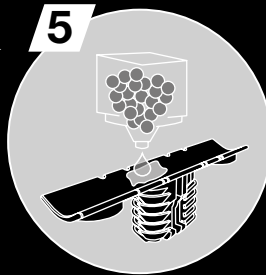
2
... and separated in the vibrating bowl, for example.



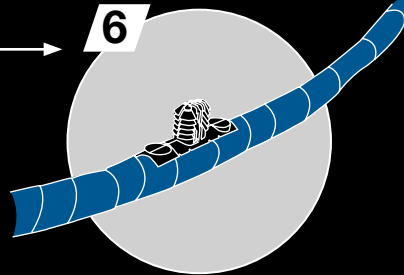
3
The sethead picks up the locator, ...



4
... where it is pre-treated with plasma.



5
The hot melt glue is applied ...



6
... and the locator is connected to the wire harness fully automatically.

Key facts and benefits

The **Automated Gluing Locator** enables wiring fasteners to be directly glued to a harness via robot, providing a **retention force of up to 600 Nm**. Adhesion takes 1/10 second and the connection **hardens immediately**. It is fast, reliable and **fully automated**.

The quick and seamless, automatic process is a major step towards fully automated harness production **in accordance to DIN 72036**:

- Full automation of a complex process
- Reduced overall costs thanks to localization of production
- Fastener standardization and streamlining
- Supply chain robustness



Take a look at our videos to find out more about the entire process and other details.

